

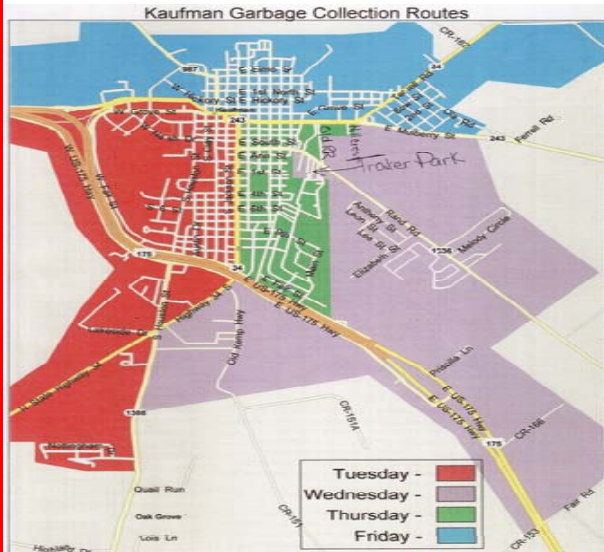


Trash, Bulk & Brush Pick Up

Progressive picks-up regular household trash weekly. Pick up days will be Tuesday through Friday. An extra 95 gallon trash cart is available for \$3 per month.

Bulk and brush pick up is done on alternating Wednesdays. The west side of the city will be picked-up on the 1st and 3rd Wednesday and the east side will be picked-up on the 2nd and 4th Wednesday.

The limit of the bulk/brush pick-up is 5 cubic yards, which is about the size of a regular pick-up truck bed. It must be placed neatly at the curb the night before the scheduled pick up dates and cannot be placed there before that time frame.



City of Kaufman Development Services

3003 S. Washington

PO Box 1168

Kaufman, Texas 75142

Phone: 972-932-2216

Fax: 972-932-0636

Marcy Ratcliff
 Director of Development Services

Joy Henderson
 Planning Technician
 Alt. Code Enforcement Off.

Thomas Lauer
 Code Enforcement Officer



Fall

As a Kaufman citizen, you may not be aware of your responsibilities regarding the City ordinances. Studies have shown that an individual does not violate a City ordinance due to lack of concern or neglect. Most often, violations are noted when the average citizen is unaware of his or her current responsibilities regarding municipal regulations. The purpose of this brochure is to bridge this communication gap by providing you with some of the safety reminders and ordinances, regulations, and policies of the City of Kaufman.



Beware Of Unauthorized Solicitors!



For your protection, if a solicitor approaches you, please ask to see their City of Kaufman Solicitors permit. If they do not have one, please contact the city immediately. If you can write down their name, the company that they are representing, vehicle description and/or license plate number; we will contact the company to let them know of the City of Kaufman requirements.

Definition Of A Family

Single family housing is limited to:

One or more persons related by blood, marriage, adoption;

Or a group not to exceed six persons that are not related by blood, marriage, adoption or guardianship occupying a single dwelling unit.



Can We Live In It?

Recreational Vehicles are great for taking a little bit of home with you on vacation, but it can't be used for a little extra home, at home.

RVs, travel trailers or motor homes may not be used for on-site dwelling purposes.

When at home, RV's are required to be parked on approved surfaces and cannot be occupied.

It's OK to connect to the water and electric in order to get the RV ready for your trip or to clean it up after the trip, you just can't permanently connect to water or electric services.

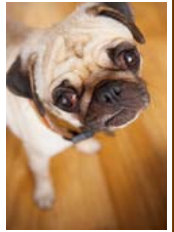


Accessory Storage Buildings & Shops: are great for storing that extra "stuff" that you don't have room in the house for. It is also great for storing the mower or the tools that you work with. It is really great to store the car in it, especially when you have to work on it!

But it's not great to allow any persons or people to occupy it or live in it. There are minimum standards regarding living quarters, which an accessory building cannot meet.

Lost A Pet?

If your pet gets loose and you cannot find it, please contact the Police Department at 972-932-3094 to see if it was picked up by our Animal Control Officer.



Also Remember:

- ◆ All pets (cats & dogs) must be kept securely on your property, on a leash, fenced yard or in your home.
- ◆ If you are off your property, the pet must be on a leash.
- ◆ All pets are to be currently vaccinated.
- ◆ Pets should not be allowed to be a nuisance to your neighbors, including: excessive barking, howling, destruction of property, and/or offensive odors.
- ◆ There is a limit of four grown pets per household.
- ◆ All pets must be registered at the City of Kaufman. To register your pets:
 - ⇒ Bring in current vaccination certificate.
 - ⇒ Complete an application.
 - ⇒ Pay the \$5 one-time registration fee.

Carbon Monoxide & Smoke Detectors



Remember to test them twice a year. The Daylight Savings schedule is a great time to check to make sure they are both working properly. Just remember **Spring Forward – Fall Back – Check Detectors.**